

The Newsletter of the Wisconsin Section
of the American Society of Agricultural
and Biological Engineers

WI ASABE SECTION

www.wiasabe.org



The Society
for
engineering
in
agricultural,
food, and
biological
systems



WEDNESDAY July 10th 2013

Section Meeting

Barron County, Wisconsin

Schedule of Events

Farm Technology Days

9:00am – 5:00pm

Breezy Hill Dairy

147 16th St

Dallas, WI 54733

WALSSA Picnic

3:00-8:00 pm Social Time and Dinner

{Bob and Karyn Schauf's Indianhead Holsteins Farm near Barron}

1659 10 ½ St. Barron, WI 54812

While it's not required, WALSSA would greatly appreciate if you would pre-register for the picnic, so they have an approximate head count.

Please register online by **Tuesday, July 2nd by going to:**

<http://www.surveymonkey.com/s/PMB6F6W>

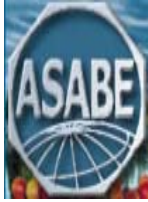
INSIDE THIS ISSUE

Meeting Schedule of Events

Directions

Secretary/Treasurer's Report

Officer Contact Information



The Newsletter of the Wisconsin Section
of the American Society of Agricultural
and Biological Engineers

July 10th - SCHEDULE OF EVENTS



Breezy Hill Dairy

147 16th Street

Dallas, WI 54733

<http://www.barronfarmtech.com>

The Wisconsin Farm Technology Days is the largest agricultural show in Wisconsin and one of the largest in the nation. The three-day outdoor event showcases the latest improvements in production agriculture, including many practical applications of recent research findings and technological developments. Each year, it is held in a different Wisconsin county - on a different host family farm.

Wisconsin Farm Technology Days provides visitors the opportunity to see and talk with more than 600 commercial and educational exhibitors in Tent City who are eager to visit with them about their machinery, equipment, facilities, products, and services needs. A wide variety of agricultural products and services used in today's dairy, livestock, and crop production systems in Wisconsin will be on display. In addition, specialists and county extension agents from the University of Wisconsin and state and federal agencies are on hand to answer questions. Educational exhibits, special interest displays, and field machinery demonstrations provide something of interest for everyone.

New this year, a portion of the field demonstration area will be dedicated to tractors with global positioning systems guidance systems. Participants can test drive a variety of tractors equipped with automatic steering or guidance systems. Hay mergers and forage harvesting equipment will also be available for participants to experience. Round and large square balers will rake baleage. Bale processing equipment that unrolls or chops forage for feed or bedding will also be demonstrated.

Show Hours July 9th-11th

Tuesday 9:00am - 5:00pm

Wednesday 9:00am - 5:00pm

Thursday 9:00am - 4:00pm



Admission = \$5

Free Parking

WALSAA PICNIC 3-8PM



After the show, enjoy the company of ASABE and WALSAA Members at the annual WALSAA Picnic!

WALSAA (Wisconsin Agricultural and Life Sciences Alumni Association) is a 501(c)(3) charitable organization that supports the connection of students, faculty and alumni to the University of Wisconsin's College of Agricultural and Life Sciences.

Each year WALSSA hosts a picnic in conjunction with Farm Technology Days, we are again honored to be part of the festivities.

No pre-registration required for this event (But it is greatly appreciated!) Register by going to <http://www.surveymonkey.com/s/PMB6F6W> by July 2nd.

Menu: Burgers, Brats and associated picnic fare including beverages

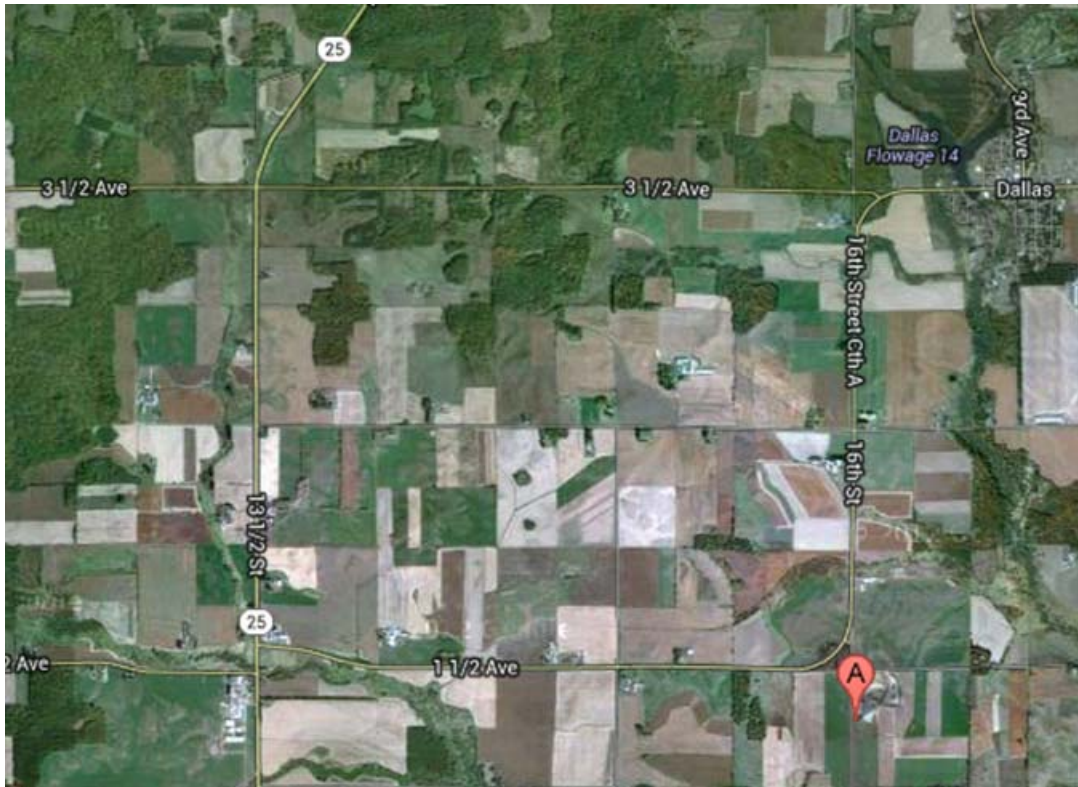
Cost: \$15 and students are free. Pay at the door!

Location:

Bob and Karyn Schauf's Indianhead Holsteins Farm
1659 10 ½ St.
Barron, WI 54812



Farm Technology Days Map



Breezy Hill Dairy

147 16th Street

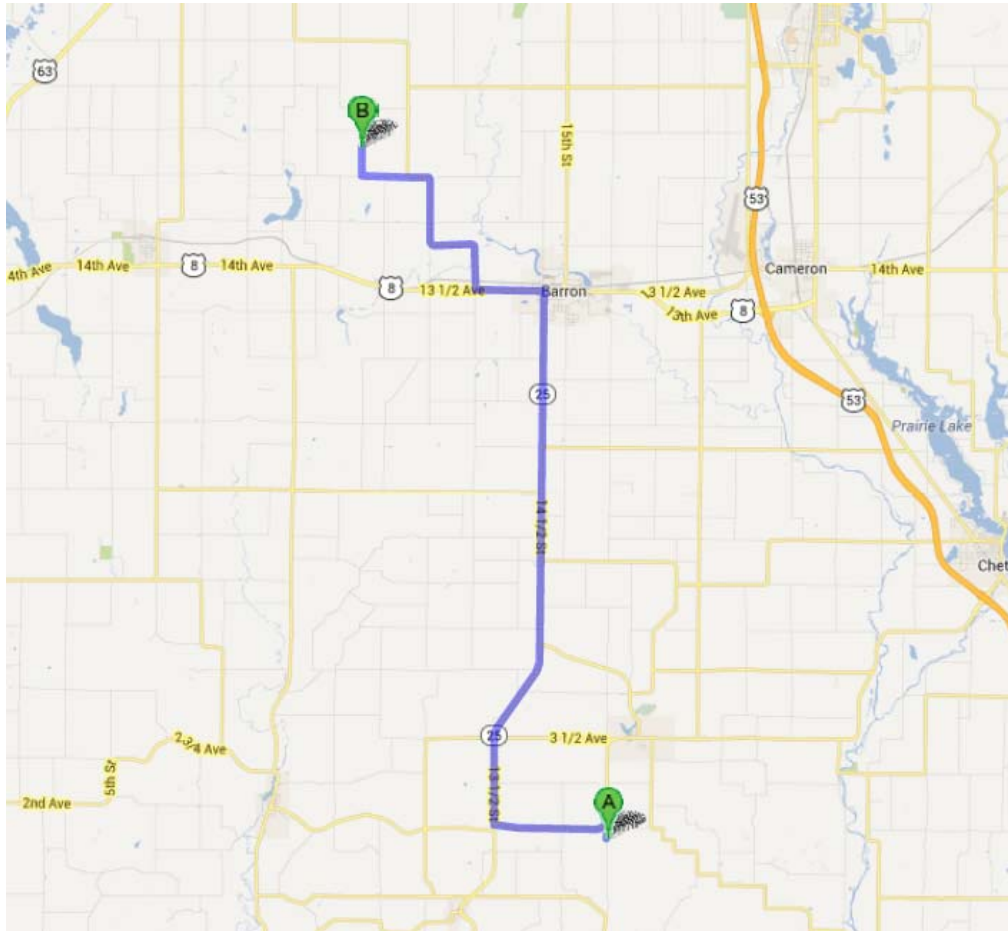
Dallas, WI 54733

Directions from the South

- Go north on U.S. Hwy 53
- Take exit 126 for County Highway I toward Chetek for 0.2 miles
- Turn left toward Co Hwy I
- Take the 1st left onto Co Hwy I for 5.5 miles
- Continue onto 3 1/2 Ave for 4 miles
- Continue onto 3 and 1/2 Ave/Dallas St for 1 miles
- Continue straight onto Co Hwy A/16th St/16th Street Cth A for 1.6 miles
 - Continue to follow Co Hwy A
- Continue onto 16 Th St
- Turn left onto 16th Street Cth A
- Continue onto 16th St/S Black St
- Destination will be on the left

WALSAA Picnic Map

Bob and Karyn Schauf's Indianhead Holsteins Farm: 1659 10 1/2 St. Barron, WI 54812



Directions from Farm Tech Days to WALSAA Picnic (approximately 35 minutes)

- Continue onto 16th Street Cth A
- Turn left onto Co Hwy A for 2.5 miles
- Turn right onto WI-25 N/13 1/2 St
 - Continue to follow WI-25 N for 12.1 mi
- Turn left onto US-8 W/13 1/2 Ave/Division Ave
 - Continue to follow US-8 W/13 1/2 Ave for 1.5 miles
- Turn right onto Co Rd T/13th St
 - Continue to follow Co Rd T for 1.9 miles
- Keep right to continue on Co Rd T/12th St
 - Continue to follow 12th St for 1.5 miles
- Continue straight onto 16th Ave for 0.4 miles
- Keep left to stay on 16th Ave
- Take the 2nd right onto 10 1/2 St
- Destination will be on the right

Secretary's Report

23 May 2013

The May 21st ASABE Wisconsin Section Meeting was held at Poclain Hydraulics Inc., in Sturtevant, WI. The meeting started with a tour of the plant, demonstration of Poclain products, and a presentation about the company and its products. Visit www.poclain-hydraulics.com/en/ to see more about the company's history and products. During social hour members were able to review the Poclain products as the company had several excellent displays that showed the products in detail.

Following an excellent meal organized by Poclain Hydraulics a short business meeting followed. Officer reports were brief and no old or new business was discussed. The next meeting will be held in conjunction with WALSAA Picnic at the Farm Technology days in Barron County in July.

Respectfully Submitted,

Garritt Boettcher

ASABE Wisconsin Section Secretary 2013-2014

Treasurer's Report

23 May 2013

Opening Balance **\$8626.75**

Revenue:

Date	From	Memo	Amount
04/10/2013	National ASABE	2012 HQ Dues Rebate	\$180.50
05/23/2013	Meeting Revenue	May 21 st Section Meeting – Poclain Hyd	\$525.00

Total: \$1100.00

Expenses:

Date	To	Memo	Check #	Amount
04/10/2013	UW-Madison Stud	Student Section Travel Exp	0635	\$1500.00
04/15/2013	Troy Runge	Awards, Frame, Shipping Exp	0637	\$227.64
05/20/2013	Cash Withdrawal	Meeting Payment Change		\$80.00
		*Cash balance will be maintained outside of account		
05/21/2013	Poclain Hydraulics	Catered Meal	0638	\$662.18
05/22/2013	Garritt Boettcher	Rmbrs. for Receipt Books (2)	0639	\$14.75

Total: \$(1779.07)

Closing Balance **\$6847.68**

Respectfully Submitted,

Garritt Boettcher

ASABE Wisconsin Section Treasurer 2013-2014

Wisconsin Section ASABE 2013-2014 Officer Team

Chair

Richard Straub
UW-Madison
(608) 262-3311

Past Chair

Dan Thiemke
John Deere Horicon Works
(920) 485-5074

Vice Chair Program (Chair-Elect)

Aaron Wittmer
Weasler Engineering
(262) 338-5432

Vice Chair Awards

Troy Runge
UW-Madison
608-890-3143

Vice Chair Membership

Shane Williams
Kuhn North America
(608) 897-2131

Vice Chair Public Relations

Amanda Crowe
USDA-NRCS
(608) 576-7651

Secretary and Treasurer

Garritt Boettcher
John Deere Horicon Works
(920) 485-5792

Webmaster

Nate Dudenhoeffer
Dudenhoeffer Agricultural Technology
(608) 432-5617

Career Development Committee

Chris Tamm
Landoll
(920) 756-6361

Tom Hoffman

Kuhn North America
608-897-2131

Chris Horton

Digi-Star
(920) 568-6258

Nomination Committee

Bill Bassett
Kuhn North America, Inc.
(608) 897-2131

Rod Zimmerman

Kuhn North America, Inc.
(608) 897-4508 Ext. 2307