

The Newsletter of the Wisconsin Section  
of the American Society of Agricultural  
and Biological Engineers

WI ASABE SECTION  
[www.wiasabe.org](http://www.wiasabe.org)



The Society  
for  
engineering  
in  
agricultural,  
food, and  
biological  
systems



**WEDNESDAY August 13<sup>th</sup> 2013**

**Section Meeting**

**Stevens Point, Wisconsin**

**Schedule of Events**

**Farm Technology Days**

9:00am – 5:00pm

Feltz Family Farm/Blue Top Farms

5796 Porter Drive, Stevens Point 54482

**WALSSA Picnic**

3:30-7:30 pm Social Time, Picnic Dinner, Tours

Hancock Agricultural Research Station

N3909 County Rd V Hancock, WI 54943

**NO Preregistration is needed!**

**INSIDE THIS ISSUE**

Meeting Schedule of Events

Directions

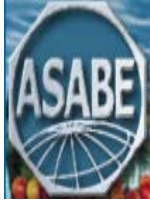
Secretary/Treasurer's Report

Officer Contact Information

***Save the Dates***

October 1, 2014 – World Dairy Expo-Maple Tree Supper Club:  
Madison Area

March 25, 2015 – WPS Farm Show, Spring Meeting and Awards  
Banquet: Oshkosh Area



The Newsletter of the Wisconsin Section  
of the American Society of Agricultural  
and Biological Engineers

## August 13th - SCHEDULE OF EVENTS

---

### **Farm Technology Days**

**Feltz Family Farm/Blue Top Farms**

5796 Porter Drive, Stevens Point 54482

<http://www.portagecountyfarmtech.com>

The Wisconsin Farm Technology Days is the largest agricultural show in Wisconsin and one of the largest in the nation. The three-day outdoor event showcases the latest improvements in production agriculture, including many practical applications of recent research findings and technological developments. Each year, it is held in a different Wisconsin county - on a different host family farm.

Wisconsin Farm Technology Days provides visitors the opportunity to see and talk with more than 600 commercial and educational exhibitors in Tent City who are eager to visit with them about their machinery, equipment, facilities, products, and services needs. A wide variety of agricultural products and services used in today's dairy, livestock, and crop production systems in Wisconsin will be on display. In addition, specialists and county extension agents from the University of Wisconsin and state and federal agencies are on hand to answer questions. Educational exhibits, special interest displays, and field machinery demonstrations provide something of interest for everyone.

*At this time the Farm Tech Days Website does not have program information.  
Check their website for updates and information on the show.*

### **WALSAA Picnic 3:30-7:30pm**

After the show, enjoy the company of ASABE and WALSAA Members at the annual WALSAA Picnic! WALSAA (Wisconsin Agricultural and Life Sciences Alumni Association) is a 501(c)(3) charitable organization that supports the connection of students, faculty and alumni to the University of Wisconsin's College of Agricultural and Life Sciences.

Each year WALSAA hosts a picnic in conjunction with Farm Technology Days, we are again honored to be part of the festivities.

Menu: Associated picnic fare including beverages

Cost: \$15 and students are free. Pay at the door!

Location: Hancock Agricultural Research Station N3909 County Rd V Hancock, WI 54943

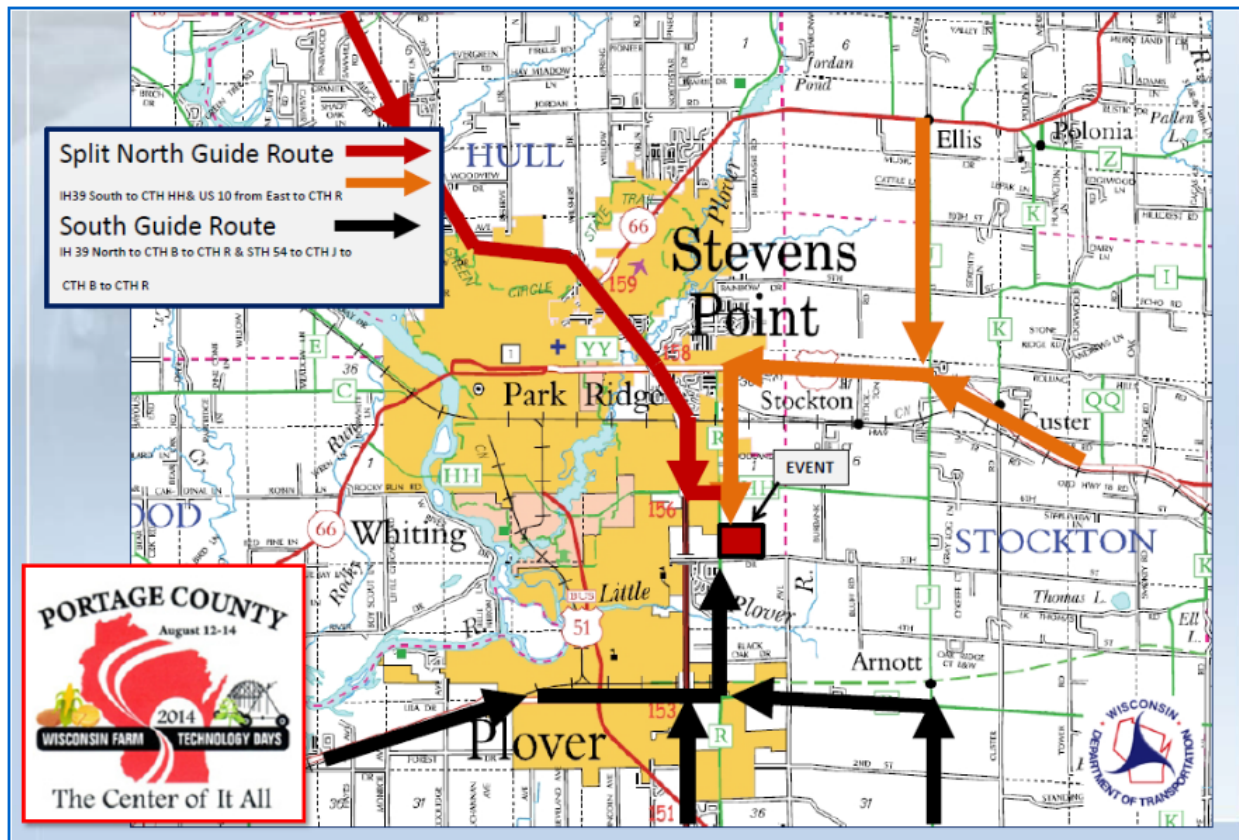
Website: <http://www.walsaa.org/>

## Farm Technology Days Map

Information and Map from: [http://www.portagecountyfarmtech.com/maps\\_directions.php](http://www.portagecountyfarmtech.com/maps_directions.php)

Feltz Family Farm/Blue Top Farms  
5796 Porter Drive, Stevens Point 54482

Please follow the provided guide routes. These routes are staffed and engineered to give show attendees the most efficient routes into and out of the parking areas at the show.



### Directions from the North:

Take Interstate 39 to Exit 156 to County Highway HH. Continue east on County Highway HH to County Road R (Brilowski Road) and turn right. County Road R will lead to the site. Follow the signs to parking area.

### Directions from the South:

Take Interstate 39 to Exit 153 to County Highway B to Amherst. Continue east on County Highway B to County Road R and turn left. County Road R will lead to the site. Follow the signs to parking area.

### Directions from the EAST:

Take US Highway 10 to Stevens Point. Turn left on County Highway R (Brilowski Road) and continue south. County Road R will lead to the site. Follow the signs to parking area.

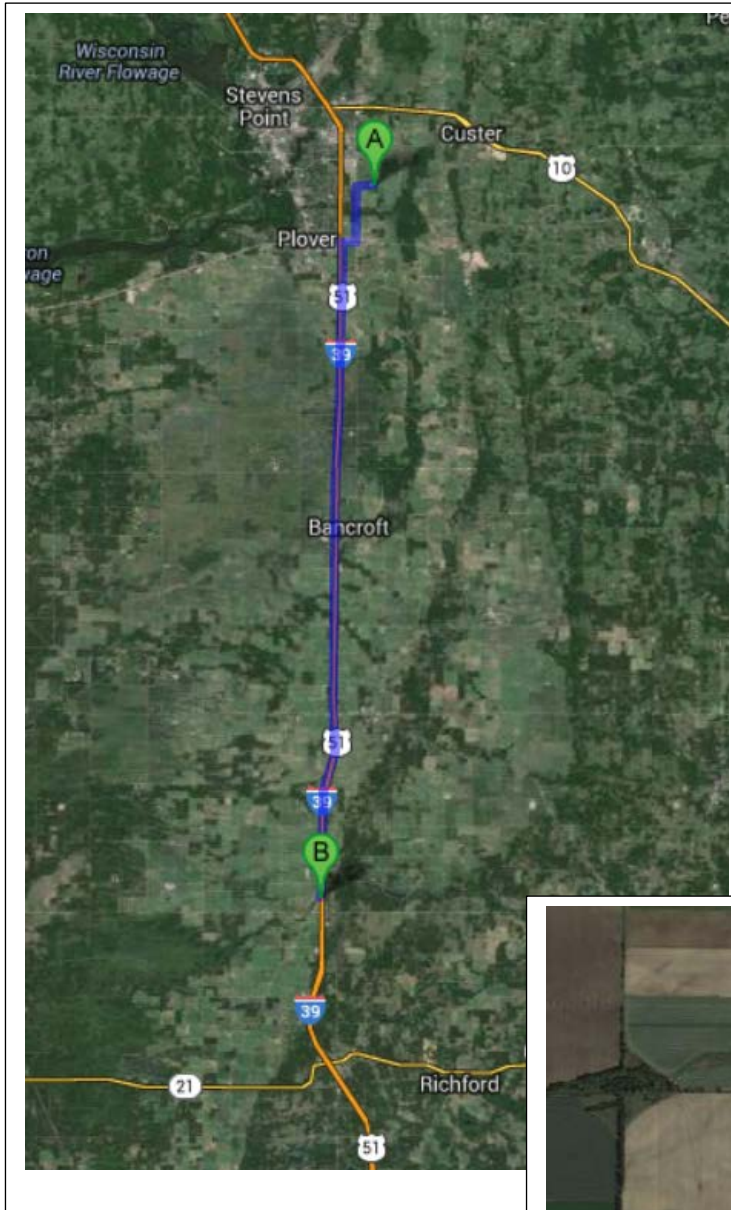
**General Parking is available and free of charge.**



## WALSAA Picnic Map

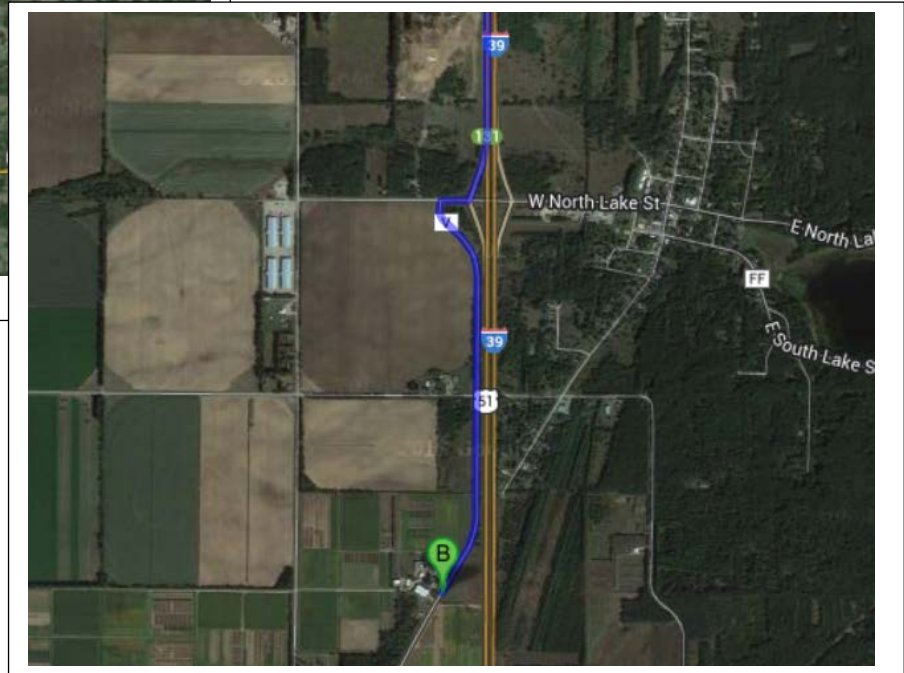
Hancock Agricultural Research Station--N3909 County Rd V Hancock, WI 54943

Website: <http://ars.wisc.edu/hancock/directions.html>



**(approximately 27 miles south of the show):**

- Travel West on County Hwy R
- Turn Right onto Plover Road
- Turn Left and merge onto I 39 South / US-51 South (towards Portage)
- Take exit for County Hwy V, (Exit #131)
- Turn right onto County Highway V.
- Take the first left onto County Hwy V (the frontage road following the highway south).
- Travel 1 mile south, the main office is the brick building on the right hand side.



## Secretary's Report

02July2014

---

The May 21, 2014 ASABE Wisconsin Section Meeting was held in Chippewa Falls. The day kicked off with a tour of Jacob Leinenkugel Brewing Company facility in downtown Chippewa Falls. Towards the end of the main tour the group was joined by the vice-president of operations who graciously answered additional questions we engineers had to have answered. All in attendance thoroughly enjoyed the tour and tasting the fine Leinenkugel products prior to and after the tour.

The group then shifted to the Avalon Hotel and Convention Center for a presentation on "Utility Scale Solar Energy" from Lynn Thompson, President and CEO of Eau Claire Energy Cooperative. Lynn reviewed the plan to install a 1.0 Megawatt solar field near the co-op headquarters. Lynn did a great job of explaining the needs and challenges of meeting the requirements and wants of customers that would like to be involved in solar energy. The presentation spurred great questions and conversation for Lynn that then continued into dinner.

A short business meeting followed dinner. Officer reports were given. Mark your calendars for the Aug 13, 2014 meeting that will be held in conjunction with Farm Technology Days and the WALSAA Picnic (watch for details in upcoming newsletter). The group then discussed an application from the UW-Madison student section for \$1500 of financial assistance for travel to the ASABE international meeting. There was a motion and approval for the request, with the understanding a student representative(s) will provide a report to the section at the meeting held in conjunction with World Dairy Expo in the fall. The group also included in the motion that applications of this type will need to be submitted at an earlier date (TBD) to ensure other request can be considered by the section. The group also suggested that the Career Development Committee investigates the possibilities of a mentor program for our student members. More information to come.

Respectfully Submitted,

Garritt Boettcher  
ASABE Wisconsin Section Secretary 2014-2015

---

# Treasurer's Report

02July2014

---

**Opening Balance** **\$6361.72**

## Revenue:

<u>Date</u>	<u>From</u>	<u>Memo</u>	<u>Amount</u>
05/06/2014	Membership Dues	Reimbursement from National	\$340.00
05/22/2014	Membership Dues	Reimbursement from National	\$1210.00
05/22/2014	Meeting Revenue	Pay at Door (21May2014)	\$225.00
05/28/2014	Meeting Revenue	Pre-Pay (21May2014)	\$50.00

**Total: \$1825.00**

## Expenses:

<u>Date</u>	<u>To</u>	<u>Memo</u>	<u>Check #</u>	<u>Amount</u>
05/21/2014	Avalon Hotel	Meeting Room and Meal	648	\$453.88

**Total: \$453.99**

**Closing Balance**

**\$7732.84**

Respectfully Submitted,

Garritt Boettcher  
ASABE Wisconsin Section Treasurer 2014-2015

## ***Wisconsin Section ASABE 2014-2015 Officer Team***

**Chair**

Richard Straub  
UW-Madison  
(608) 262-3311

**Past Chair**

Richard Straub  
UW-Madison  
(608) 262-3311

**Vice Chair Program (Chair-Elect)**

Bryan Rowntree  
Kuhn North America  
(608) 897-2131

**Vice Chair Awards**

Chris Tamm  
Landoll  
(785) 562-4601

**Vice Chair Membership**

Shane Williams  
Kuhn North America  
(608) 897-2131

**Vice Chair Public Relations**

Amanda Crowe  
USDA-NRCS  
(608) 576-7651

**Secretary and Treasurer**

Garritt Boettcher  
John Deere Horicon Works  
(920) 485-5792

**Webmaster**

Nate Dudenhoeffer  
Dudenhoeffer Agricultural Technology  
(608) 432-5617

**Career Development Committee**

Rod Zimmerman  
Kuhn North America, Inc.  
(608) 897-2131

Tom Hoffman  
Kuhn North America  
608-897-2131

Chris Horton  
Digi-Star  
(920) 568-6258

**Nomination Committee**

Bill Bassett  
Kuhn North America, Inc.  
(608) 897-2131

Troy Runge  
UW-Madison  
608-890-3143